



im  
ESSENTIAL

impress  
THE DECOR COMPANY

DECORS BY IMPRESS. MADE TO IMPRESS.

Hello. I'm Essential.

Essentially I'm a picture printed on paper,  
yet remarkably I'm the face of your product.  
I'm the colour, the movement, the style that  
creates an emotional connection.

Fundamentally I'm essential therefore  
I'm your basic requirement.

im  
ESSENTIAL

DECORS BY IMPRESS. MADE TO IMPRESS.

A man with curly brown hair and a beard, wearing dark sunglasses and a brown leather bomber jacket over a blue shirt and jeans, stands with his hands on his hips. He is looking upwards and to the right. The background is a bright blue sky and the yellow fuselage of a small airplane. The text "I'M GLORIOUS!" is overlaid in large white letters across the center of the image.

I'M GLORIOUS!

I'M SUND MAPLE

# SUND MAPLE

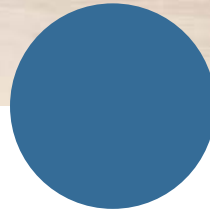
20111 | 5010333

# SUND MAPLE

20111 | 5010333







Ich bin Sund Maple. Ich bin attraktiv und dennoch easy-going und natürlich. Besonders der nordische Stil passt perfekt zu meinen gebleichten oder leicht vergrauten Farbnuancen.

I´m Sund Maple. I´m attractive yet easy-going and fresh. The Nordic style fits my bleached tones and slightly greyish colour shades perfectly.

A photograph of two young women in a playful, joyful pose. The woman in the foreground is wearing a red bandana with a white pattern, a blue and red plaid shirt over a white t-shirt, and dark denim shorts. She is laughing heartily, looking towards the camera. The woman behind her is wearing a maroon beanie, a red and white plaid shirt over a white t-shirt, and dark denim shorts. She is also laughing and has her arms around the first woman's shoulders. They are standing in front of a wall covered in graffiti, including a large black silhouette of a hand. The overall mood is carefree and happy.

I'm DELIGHTFUL!

I'm BELON OAK



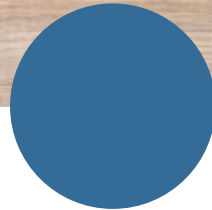
# **BELON OAK**

32290 | 5009466

# BELON OAK

32290 | 5009466





Ich bin Belon Oak. Zerschlissen und vielseitig komme ich dennoch als klassisch ruhige Eichenstruktur daher. Obwohl meine Holzmaserung streng linear ist, bin ich ein sehr individuelles und lebhaftes Dekor.

I´m Belon Oak. I´m versatile and worn, yet a classical calm oak structure. Although my wood grain and layout is perfectly linear, I´m an individual and vivid decor.

A woman with long brown hair is sitting on a grey sofa, smiling broadly. She is wearing a light beige sweater and dark leggings. She is holding a brown mug in her hands. The background is a large window with a grid pattern, through which some foliage is visible. The lighting is warm and soft.

I'm SUPER!

I'm ALADIN





# ALADIN

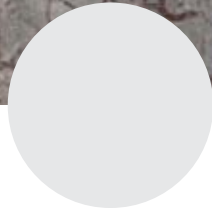
71043 | 5008962



# ALADIN

71043 | 5008962





Ich bin Aladin. Ich bin alt und ausgewaschen und wirke trotzdem harmonisch und elegant. Ich sehe aus wie ein edler, alter Orientteppich. Und doch vornehm und modern zugleich.

I´m Aladin. I´m worn and eroded, yet harmonious and elegant. I´m like an old oriental carpet, classicly grand and modern at the same time.

I'm GENIUS!

I'm VARESE





The background of the image is a close-up, vertical view of a wood grain. The wood has a rich, dark brown color with prominent, wavy vertical lines and several large, circular knots. The lighting is soft, highlighting the texture and natural imperfections of the wood.

**VARESE**

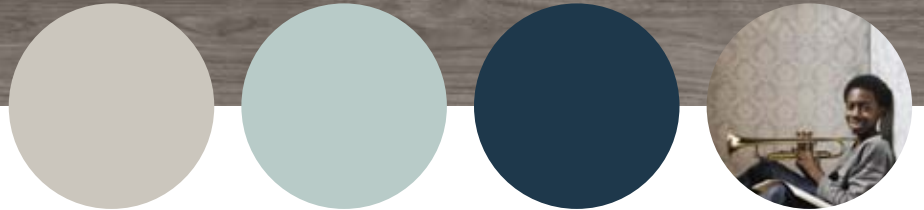
30170 | 9010169

# VARESE

30170 | 9010169







Ich bin Varese. Wenn Du mich siehst, hast Du gleich das Bild von frisch geschnittenem Holz vor Augen. Mein Charisma frischt Deine Wohnumgebung auf.

I´m Varese. When you see me, your mind will immediately conjure images of freshly cut wood. My charisma revitalises your living environment.

A young couple is laughing and walking through a snowy field with tall, dry grasses. The woman on the left is wearing a light-colored jacket with a fur collar, a striped sweater, and blue jeans. The man on the right is wearing a dark jacket, a plaid scarf, and dark pants. The background is a bright, snowy landscape with some trees in the distance.

I'm **WONDERFUL!**

I'M GREENVILLE OAK



# GREENVILLE OAK

32578 | 9010430

# GREENVILLE OAK

32578 | 9010430





Ich bin Greenville Oak. Ich bin ein großzügiges, natürliches Fußbodendekor, das Akzente setzt. Kräftige Kontraste, spannende Wachstumsmerkmale und die schöne 3D-Wirkung ergeben eine lebendige und individuelle Note.

I´m Greenville Oak. I´m a powerful inviting design with incredible structures. Strong contrasts, stimulating growth characteristics and the beautiful 3D effects provide a vivid and individual touch.





I'M **SPLendid!**

I'M JARAMA ELM

# JARAMA ELM

30163 | 5009518

# JARAMA ELM

30163 | 5009518







Ich bin Jarama Elm. Ich inspiriere Deine Phantasie.  
Meine Verwitterungsspuren und Windrisse kreieren eine  
individuelle Patina und erzählen meine Geschichte von einem  
lange genutzten Möbelstück.

I´m Jarama Elm. I´m stimulating your imagination. My weathered  
marks and cracks create an individual patina that tells stories of  
antique furniture and nostalgia.



**I'm AWESOME!**

I'm TAXUS



# TAXUS

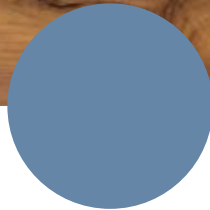
39516 | 5008055



# TAXUS

39516 | 5008055





Ich bin Taxus. Mein schimmernder Honigton erzählt Geschichten über Wachs und Polituren, die mich veredelt haben. Die feinen, sehr präzisen Risse unterstützen die Patina meiner Oberfläche.

I´m Taxus. I´m telling tales of polishing and waxing with my honey shade shimmer. The fine, precisely developed cracks support the precious, old patina of my surface.



I'M FANTASTIC!

I'M BROWN SILK



The background of the image is a dark brown wood grain texture. The grain runs vertically, with various shades of brown and black, creating a rich, natural pattern. The texture is slightly irregular, with some lighter streaks and darker spots, giving it a realistic appearance.

# **BROWN SILK**

60130 | 5007468

# BROWN SILK

60130 | 5007468





Ich bin Brown Silk. Ich strahle Ruhe aus. Und Eleganz. Die leichten Wellen aus Weiss und Schwarz heben die Strenge auf, die in meiner Struktur verankert ist.

I´m Brown Silk. I´m radiating calmness and elegance. The light waves of black and white unravel the formality, which forms my structure.



A woman with her hair in a bun, wearing a white tutu and fishnet stockings, is sitting on a wooden floor. She is holding her ballet slippers. The background is a rustic, grey-painted wooden wall.

I'm FABULOUS!

I'M ORINOCO ASH

A close-up photograph of Orinoco Ash wood, showing a vertical grain pattern with a mix of light tan and medium brown tones. The wood has a smooth, slightly glossy finish.

# ORINOCO ASH

30168 | 5010296

# ORINOCO ASH

30168 | 5010296







Ich bin Orinoco Ash. Ich bin ein mutiges und dennoch elegantes Dekor. Du wirst mich sofort wiedererkennen und in mich verliebt sein.

I´m Orinoco Ash. I´m a courageous yet elegant decor. You will recognize me and fall in love with me immediately.

A man with a beard, wearing a grey three-piece suit and a black bowler hat, looking down. The background is dark.

I'm GORGEOUS!

I'M TELA

**TELA**

71067 | 9010297

# TELA

71067 | 9010297







Ich bin Tela. Ich bin eine feine, individuelle Textiloptik. Meine Schuss- und Kettfäden sind leicht unregelmäßig in Stärke und Färbung, was ein Gewebe von besonderer Eleganz und Tiefe entstehen lässt.

I´m Tela. I´m a textile on paper. My weave and thread are slightly irregular in intensity and shade, creating a distinct elegance and depth.



I'm **MAGNIFICENT!**

I'm SERRA



**SERRA**

60135 | 9010683

# SERRA

60135 | 9010683







Ich bin Serra. Ich animiere zum Experimentieren mit Farben und Stilen. Ob Stein, Metall oder Putz – alles ist mit mir möglich.

I´m Serra. I´m inviting you to experiment with colours and style. Stone, metal, plaster – anything is possible with me.

A photograph of two young women riding a bicycle together in a bohemian style. The woman in the foreground is wearing a floral headband, a white lace top, and blue jeans, and is smiling broadly with her mouth open. The woman behind her is wearing a gold headband and a white top, also smiling. The background is a blurred brick building. The text 'I'm EPIC!' is overlaid in the center, with 'I'm SAVANNA' below it.

I'm EPIC!

I'm SAVANNA

# SAVANNA

35019 | 9010105



# SAVANNA

35019 | 9010105





Ich bin Savanna. Authentizität und Materialität sind eminent wichtig in virtuell dominierten Zeiten. Meine Holzoptik scheint zu leben und schafft eine Atmosphäre der Geborgenheit.

I´m Savanna. Authenticity of material is especially important in these virtual-generated times. My reproduction of the natural material appears to be alive and creates an atmosphere of security.

A man and a woman are seated at a restaurant table, laughing joyfully. The man, on the left, has a beard and is wearing a dark suit jacket, a light blue shirt, and a patterned tie. The woman, on the right, has long dark hair and is wearing a black top. She is holding a wine glass filled with white wine. The table in front of them is set with white plates, glasses, and napkins. The background features a tufted, light-colored leather booth.

**I'm SUPERB!**

I'M ANCHOR ASH



The background of the image is a dark, charcoal-colored wood grain. The grain is vertical and shows a clear, repeating pattern of knots and fine lines, characteristic of ash wood. The lighting is even, highlighting the texture of the wood.

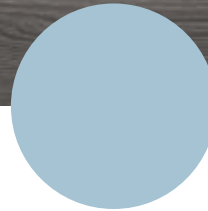
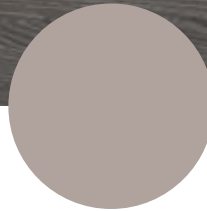
# ANCHOR ASH

30157 | 5007227

# ANCHOR ASH

30157 | 5007227





Ich bin Anchor Ash. Ich bin die perfekte Ergänzung zum Trendthema der nordischen, hellen Hölzer und Offwhite. Meine Plankung ist kaum sichtbar und meine Erscheinung harmonisch und fein.

I'm Anchor Ash. I'm the perfect addition to the trend theme of the Nordic, light wood and Off-white. My planking is hardly visible and my appearance harmonic and delicate.



A young girl with curly, light brown hair is shown in profile, looking down and smiling slightly. She is holding a large, light-colored seashell to her ear. She is wearing a black and white striped top with a white lace trim. The background is a soft, out-of-focus beach scene with sand and water.

I'm CHARMING!

I'm KALMAR PEAR

The background of the image is a close-up, vertical view of a light-colored wood grain, likely pine or a similar softwood. The grain runs vertically, showing various patterns of growth, including knots and wavy lines. The color is a warm, natural tan. Centered over this background is the text 'KALMAR PEAR' in a bold, white, sans-serif font.

# KALMAR PEAR

28047 | 5009354

# KALMAR PEAR

28047 | 5009354







Ich bin Kalmar Pear. Ich bin authentisch und unverwechselbar.  
Mit mir ist eine Vielzahl an Kombinationen von Details und  
Farben vorstellbar.

I´m Kalmar Pear. I´m authentic and distinctive. My characteristic  
soft colour allows for a variety of combinations and contrasts.

A photograph of a woman with long blonde hair, wearing a grey sweater, leaning over and hugging a young child from behind. The child is lying on their back in a field of bright yellow flowers, laughing joyfully. The scene is bathed in warm, golden light, suggesting a sunny day. The background is a soft-focus field of similar flowers.

I'M ADORABLE!

I'M WAKEFIELD OAK



The background of the entire image is a close-up, vertical view of a wood grain, specifically oak. The planks are arranged in a staggered pattern, showing various shades of brown from light tan to deep, rich chocolate and near-black tones. The grain is prominent, with many knots and swirling patterns. The lighting is even, highlighting the natural texture and imperfections of the wood.

# WAKEFIELD OAK

32572 | 5008990



# WAKEFIELD OAK

32572 | 5008990





Ich bin Wakefield Oak. Eine klassische, zeitlose und wandelbare Eiche. Mein Dekor ist einzigartig, sowohl in kontrastreichen als auch homogenen Designs.

I´m Wakefield Oak. I´m a classic, timeless and versatile oak. Nevertheless, my decor is unique both in contrast or as an homogeneous design.

A group of men are shown in a celebratory mood, cheering and raising their fists. The man in the foreground is wearing a grey and blue patterned hoodie and has a wide, joyful expression. Behind him, another man in a green shirt is also cheering. In the background, two more men are visible, one with a beard and another with a mustache, both smiling and looking towards the left. The scene is set indoors with bright, natural light coming from a window with white curtains on the left. The overall atmosphere is one of excitement and camaraderie.

I'm TOP!

I'm MORINGA



# MORINGA

32286 | 5008455

# MORINGA

32286 | 5008455





Ich bin Moringa. Ich bin stark und akzentuiert. Meine zeitlose Struktur macht individuelle Farb- und Dekorvariationen möglich.

I´m Moringa. I´m strong and accentuated. Individual colour variations are no problem due to my bold timeless structure.





I'm WOW!

I'M LESINA

# LESINA

39106 | 5008994

# LESINA

39106 | 5008994







Ich bin Lesina. Ich bin alt, schaue aber neu aus. Ich bin traditionell und doch modern. Meine starken Poren, leichten Risse und verknoteten Elemente erscheinen frisch und jugendlich aber dennoch vertraut.

I´m Lesina. I´m old, yet new. I´m traditional, yet modern. My strong pores, delicate cracks and knotty elements appear fresh and youthful, though somehow familiar.

A man with dark hair and glasses, wearing a black tuxedo jacket, white shirt, and black bow tie, stands in a dimly lit, elegant room. He is holding a cigar in his right hand. The background features ornate, patterned wallpaper and a table with a red tablecloth and white linens. The lighting is warm and focused on the man.

**I'm BRILLIANT!**

I'm CANNERO WALNUT

# CANNERO WALNUT

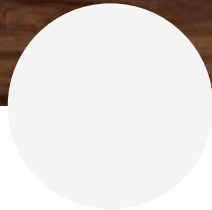
48172 | 9010521



# CANNERO WALNUT

48172 | 9010521





Ich bin Cannero Walnut. Ein Nussbaum mit starkem, authentischem Charakter. Schau mich an und spüre sofort mein Charisma.

I´m Cannero Walnut. I´m a walnut with a strong, authentic character. Look at me and feel my charisma immediately.



I'm ACE!

I'M DURANGO



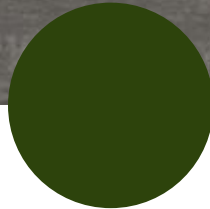
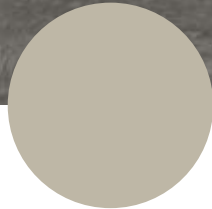
# DURANGO

50247 | 5007703

# DURANGO

50247 | 5007703





Ich bin Durango. Ich wurde aus hartem und schwerem Katalox-Holz geschaffen. Meine feinen Poren und dezenten Blumen erzeugen im Kontrast mit den verschiedenartigen Bearbeitungsspuren eine besonders spannende Oberfläche.

I´m Durango. I´m made out of hard and dense Katalox wood. My fine pores and discrete cathedrals produce a particularly inspiring surface in contrast to the diverse signs of wear and tear.





I'm cosy!

I'M SACRAMENTO OAK



# SACRAMENTO OAK

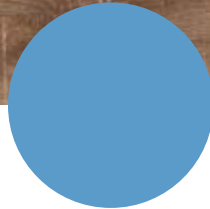
32544 | 5005338

# SACRAMENTO OAK

32544 | 5005338







Ich bin Sacramento Oak. Ein starkes und selbstbewusstes Dekor.  
Dennoch ist meine Struktur präzise und charmant.

I`m Sacramento Oak. I`m a bold and confident decor.  
Yet my structure is precise and charming.

A man with a beard, wearing a dark suit and white shirt, stands on the left. A woman with long dark hair, wearing a black dress, stands on the right, looking at the man. They are in front of a classical building with arched windows and ornate details. The text "I'm EXCELLENT!" is overlaid in the center, with "I'm" in a smaller font and "EXCELLENT!" in a larger, bold font. Below it, "I'm LAGO OAK" is written in a smaller font.

I'm EXCELLENT!

I'm LAGO OAK

# LAGO OAK

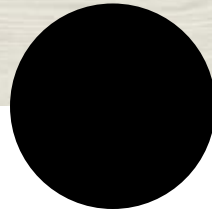
32297 | 9010685



# LAGO OAK

32297 | 9010685





Ich bin Lago Oak. Ich bin eine klassische Schönheit.

I´m Lago Oak. I´m a classic beauty.



I'm JAZZY!

I'M SKAGEN CHERRY





# SKAGEN CHERRY

43098 | 5009250

# SKAGEN CHERRY

43098 | 5009250





Ich bin Skagen Cherry. Ich bin lebendig und authentisch.  
Ein klassisches Holz mit einem doch sehr innovativen Layout  
zu sein, macht mich zu einem einzigartigen Eyecatcher.

I´m Skagen Cherry. I´m vivid and authentic. Being a classical  
wood but with an innovative layout turns me into a unique  
eye-catcher.



A top-down view of a person sitting on a light-colored, textured rug. They are wearing a white, chunky-knit sweater and grey socks. They are holding a clear glass mug filled with dark coffee. To their right, a stack of books is placed on a round, woven basket. The overall aesthetic is cozy and minimalist.

I'm CAPTIVATING!

I'm VALLEE OAK

A close-up photograph of a wood surface, showing a prominent vertical grain pattern with a large, detailed knot on the left side. The wood has a natural, slightly weathered appearance with varying shades of brown and tan. The lighting is soft, highlighting the texture of the wood fibers.

# VALLEE OAK

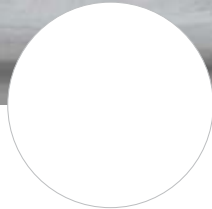
70502 | 5008704

# VALLEE OAK

70502 | 5008704







Ich bin Vallee Oak. Ich bin anders, denn ich kombiniere Holz und Farbe in einer ganz neuen Art. Aquarellfarben sind frei und leuchtend auf Holz aufgetragen, wodurch ein organisches und doch künstlerisches Design entsteht.

I´m Vallee Oak. I´m different because I combine wood and colour in a new way. Watercolours are free and luminescent. When applied to wood an organic and yet artistic design is created.



I'm AMAZING!

I'm BOUNTY

# BOUNTY

50248 | 5008627



# BOUNTY

50248 | 5008627





Ich bin Bounty. Ich bin ein anmutiges, fein gezeichnetes Dekor. Obwohl meine Details präzise gezeichnet sind, kreieren meine weichen Bewegungen und sanften Farbverläufe eine wohlige Atmosphäre.

I´m Bounty. I´m a graceful, finely drawn decor. Although my layout is precisely drawn, the soft movement and gentle colour gradient create a cosy atmosphere.

A man with a beard and tattoos is performing a handstand in a gritty, urban environment. He is wearing a black t-shirt and black pants. The background features a large, arched doorway covered in graffiti. The lighting is dramatic, highlighting the man's physique and the textures of the surrounding walls and floor.

I'M TERRIFIC!

I'M LANSING OAK



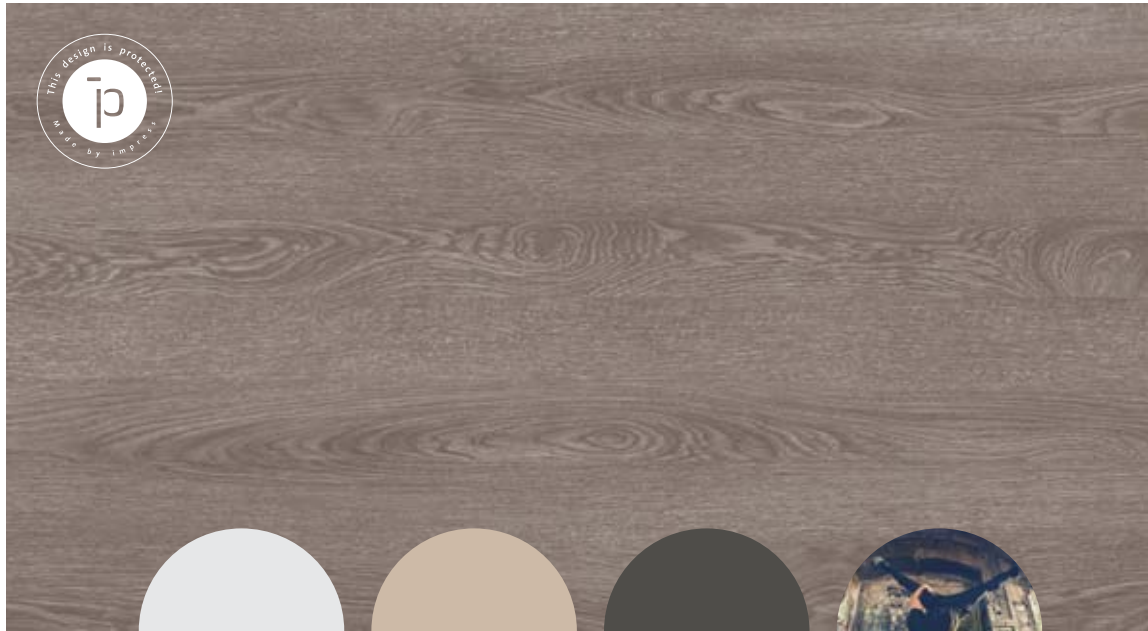
# LANSING OAK

32298 | 9010728

# LANSING OAK

32298 | 9010728





Ich bin Lansing Oak. Ich bin extrem natürlich, obwohl ich einen feinen Glanzeffekt ausstrahle.

I´m Lansing Oak. I´m extremely natural though I do have a delicate gloss effect.





I'm COOL!

I'M SHARUN TEAK

The background of the image is a close-up, vertical view of a wooden surface. It features several vertical planks of wood, each with a distinct grain pattern. The wood has a warm, light brown or tan hue. The grain lines are mostly vertical, with some natural knots and variations in color and texture. The lighting is even, highlighting the natural beauty of the wood.

# SHARUN TEAK

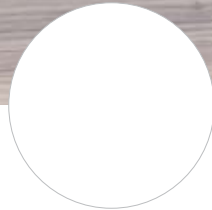
50528 | 5008050

# SHARUN TEAK

50528 | 5008050







Ich bin Sharun Teak. Ich bin anders als andere rustikale Dekore,  
aber noch immer kraftvoll und großzügig.

I´m Sharun Teak. I´m different than other rustic decors.  
Light and elegant but still powerful and valiant.

## **FARBVERBINDLICHKEIT DER DEKORABBILDUNGEN**

AUF DIE ORIGINALGETREUE WIEDERGABE DER ABGEBILDETEN DEKORE WURDE GROSSE SORGFALT VERWENDET. DENNOCH KOMMT ES DRUCKBEDINGT ZU FARBABWEICHUNGEN ZWISCHEN DEN ABBILDUNGEN UND DEM ORIGINALMATERIAL. BITTE NUTZEN SIE DESHALB IMMER EIN ECHTES MATERIALMUSTER FÜR IHRE ENDGÜLTIGE DEKORENTSCHEIDUNG.

IRRTÜMER, ÄNDERUNGEN UND VERBESSERUNGEN VORBEHALTEN.

## **COLOUR ACCURACY OF THE DECOR IMAGES**

GREAT CARE HAS BEEN TAKEN TO ENSURE THAT THE REPRODUCTION OF THE DECORS DISPLAYED IN THIS PUBLICATION IS AS TRUE TO THE ORIGINAL AS POSSIBLE. HOWEVER, THERE WILL BE COLOUR DEVIATIONS BETWEEN THE IMAGES AND THE ORIGINAL MATERIAL DUE TO PRINTING. WE WOULD THEREFORE ALWAYS ADVISE YOU TO USE OUR REAL SAMPLE MATERIAL WHEN MAKING YOUR FINAL DECOR DECISION.

MISTAKES, CHANGES AND AMENDMENTS RESERVE.

## **DEKORABBILDUNGEN**

DIE DEKORE AUF FOLGENDEN SEITEN SIND IM MASSSTAB 1:2 ABGEBILDET:

5, 9, 13, 17, 25, 29, 33, 37, 41, 45, 49, 53, 57, 65, 69, 73, 77, 85, 89, 93, 97, 101

DIE FUSSBODENABBILDUNGEN AUF FOLGENDEN SEITEN SIND IM MASSSTAB 1:5:

21, 61, 81, 105

## **DECOR IMAGES**

THE DECORS ON THE FOLLOWING PAGES ARE SHOWN AT THE SCALE OF 1:2:

5, 9, 13, 17, 25, 29, 33, 37, 41, 45, 49, 53, 57, 65, 69, 73, 77, 85, 89, 93, 97, 101

THE FLOORING IMAGES ON THE FOLLOWING PAGES ARE SHOWN AT THE SCALE OF 1:5:

21, 61, 81, 105

**PROTECTED DESIGN**



© 2016 IMPRESS TECH LTD.

**FOR FURTHER INFORMATION/FÜR WEITERE INFORMATIONEN**

IMPRESS SURFACES GMBH  
DORFSTRASSE 2  
63741 ASCHAFFENBURG  
GERMANY

PHONE +49.6021.40 60  
FAX +49.6021.40 62 95  
E-MAIL [INFO@IMPRESS.BIZ](mailto:INFO@IMPRESS.BIZ)

© 2016 IMPRESS SURFACES GMBH | PUBLISHED BY IMPRESS SURFACES GMBH | DORFSTRASSE 2  
63741 ASCHAFFENBURG | GERMANY | FOR FURTHER INFORMATION: [WWW.IMPRESS.BIZ](http://WWW.IMPRESS.BIZ)



The logo for Impress, featuring the word "impress" in a lowercase, sans-serif font. A small blue horizontal bar is positioned above the letter "i".  
THE DECOR COMPANY